

Radon Monitor User's Guide

Accurate, Reliable, Economical
Model 1027



User's Guide, Continuous Radon Monitor

© Copyright 2017 by Sun Nuclear Corporation. All rights reserved.

The information contained in this manual is copyrighted and all rights reserved by Sun Nuclear Corporation. Copying, duplicating, selling, or otherwise distributing any part of this product without the prior written consent of Sun Nuclear Corporation is prohibited.

Sun Nuclear Corporation reserves the right to make periodic modifications to this document without obligation to notify any person or entity of such revision.

This manual is written for:

Software version: 1.0.0.1

Continuous Radon Monitor™ is a trademark of Sun Nuclear Corporation. Other trademarks or trade names are the property of their respective owners.

Document 102711, Rev H, 28 August 2017



Sun Nuclear Corporation
3275 Suntree Boulevard
Melbourne, FL 32940 USA
+1 321-259-6862
www.sunnuclear.com



SUN NUCLEAR
corporation

Preface

Description

The Model 1027 Professional Continuous Radon Monitor is an electronic device that uses a diffused-junction photodiode sensor to measure the concentration of radon gas.

The unit is operated using mains power and includes a 9-volt battery for backup power. A numerical display shows the average radon gas concentration.

The Model 1027 has been evaluated and accepted by:

- National Radon Safety Board (NRSB); Device code: 31807; Group Code: CR.
- National Environmental Health Association National Radon Proficiency Program (NEHA-NRPP); Device Code: 223; Group Code: 4.

Health and Safety Instructions



WARNING: To avoid risk of electric shock, this device must only be connected to a supply mains with protective earth (ground).



WARNING: Never use the radon monitor in an area that could contain explosive gases. A spark from inside the device could ignite an explosion.

To protect Continuous Radon Monitor performance and cable insulation, never pull on a cable to disconnect it. Always grasp the plug or connector.

Do not permit water or any other liquids to spill onto the instrument.

For instructions to report health or safety related concerns, see *Reporting Health or Safety Related Issues or Concerns* on page 36.

Contents

Preface	iii	Storage	20
Description	iii	Cleaning	20
Health and Safety Instructions	iii	Disposing and Recycling	20
Introduction	1	Service and Calibration	20
Parts	1	Changing Backup Battery	21
Options and Accessories	1	Thermal Printer Maintenance	21
Setup	3	Rechargeable Battery Pack	21
Unpack	3	Efficient Printer Battery Use	22
Set Up Hardware	3	Printer DIP Switch Settings	22
Set Up Thermal Printer	3	Troubleshooting	24
Set Up Software	5	Troubleshooting Model 1027	24
Prerequisites	5	Troubleshooting Thermal	
Install Software	5	Printer	25
Set Up Communication	5	Troubleshooting USB to	
Using Serial Port	6	Serial Adapter	25
Using USB to Serial Adapter	7	Contacting Sun Nuclear Support	28
Support Website		Support Website	28
Operation	12	Warranty	28
Set Up	12	Reference	29
Clear Memory	13	Hardware Reference	29
Conduct Test	13	Model 1027	29
Display Results	13	Thermal Printer	31
Delayed Results	14	Software Reference	32
Interpreting Results	14	Radon Reference	33
Shutting Down	15	Specifications	34
Reports	16	Recommended System	
Thermal Printer Reports	16	Requirements	34
Computer Reports	17	Model 1027 Specifications	34
Prerequisites	17	Regulatory Supplement	35
Set Up Report Information	17	Sun Nuclear Corporation	
Transfer Data	18	Symbols	35
Edit and Print Reports	19	Operator Responsibility	36
Save Reports	19	Reporting Health or Safety	
Support and Maintenance	20	Related Issues or Concerns	36
Maintaining Hardware	20	Modifications to Equipment	36
Repairs	20	Interaction with Other	
Inspection	20	Electrical Equipment	36

1 Introduction

Parts

The following parts are shipped with Continuous Radon Monitor, Model 1027.



Part Number	Qty	Description
102730 or 102730-RM	1	Model 1027 Professional Continuous Radon Monitor or Model 1027 Professional Continuous Radon Monitor (Refurbished)
741011	1	Power supply, 18 VDC, 0.3A,100-240 VAC (not shown)
801032Z	1	Cable, RS-232 (serial), DB9M to DB9F, 6 ft. (not shown)
102713	1	Technical Bulletin 12-09, USB Port Troubleshooting (not shown)
0200014	1	Customer Support site introduction letter (not shown)

Figure 1-1. Parts Furnished with P/N 102700-0 and 102700-0RM

Options and Accessories

The following accessories can be used with the Model 1027.

Table 1. Model 1027 Options and Accessories

Part Number	Description
102750	Portable thermal printer (see <i>Thermal Printer</i> on page 2)
850029	USB to Serial Adapter
741012	International blade kit for power supply P/N 741011
102377	Report, Radon Gas Measurement, blank
102378	Sign, self-adhesive, "Warning, Closed Building Procedure"
102379	Sign, plastic, hanging, "Caution, Radon Test in Progress"
1028130	Sign, vinyl static cling, "Warning, Closed Building Procedure"



WARNING: Use only accessories that are specifically authorized by Sun Nuclear for use with Model 1027.

Thermal Printer

The optional portable thermal printer, P/N 102750, is used to print reports after measurements. The following parts are included.



Number	Description
850040Z	Thermal printer, 40 column
022005Z	Power supply, 6VDC, 2.1 mm plug (not shown)
801008Z	Mains power cord for power supply, 2.3 m, 125V 5-15 P C13 (IEC Plug to USA style; not shown)
750052	Rechargeable battery pack, 4.8V Ni-MH
780374	Connector, gender changer-mini 9 M-M (not shown)
801032Z	Cable, RS-232 (serial), DB9M to DB9F, 6 ft. (not shown)
850043Z	Thermal printer paper roll (see Figure 2-2 on page 4)

Figure 1-2. Optional Portable Thermal Printer, P/N 102750



Note: The impact printer (P/N 020030) offered with earlier Model 1027 Radon Monitors is no longer available. The replacement is the thermal printer described in Figure 1-2.

2 Setup

Unpack

Unpack the shipping box and identify the parts. See *Parts* on page 1.



Note: Save the packing material if you plan to return the Model 1027 for periodic re-calibrations. See *Thermal Printer Maintenance* on page 21.

Set Up Hardware

Before collecting data with Model 1027, decide how you want to print reports.

- Using the optional thermal printer, P/N 102750. See *Set Up Thermal Printer* below.
- Using a printer connected to a laptop or personal computer. This option requires the Radon Monitor software application. See *Set Up Software* on page 5.

Set Up Thermal Printer

- 1 Connect gender changer (P/N 780374) to printer serial port.
- 2 Connect RS-232 (serial) printer cable (P/N 801032Z) to Model 1027 DATA PORT and to printer gender changer.
- 3 To operate printer on AC power, plug power supply (P/N 022005Z) into printer power connector. Then, plug detachable power cord (P/N 801008Z) into printer power supply and into a mains power source that matches ratings on power supply.

Alternately, operate printer from its rechargeable battery.

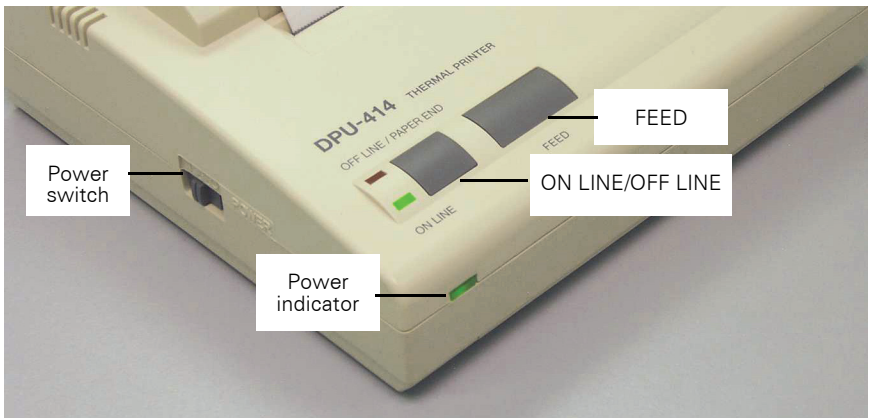


Figure 2-1. Printer Controls and Indicators

- Slide Power switch (on side of printer) to On (I) position (Figure 2-1). Green power indicator turns on and flashes once every second. If battery is low, indicator flashes once every 1/2 second.



WARNING: Do not press and hold ON LINE button and FEED button simultaneously for 30 seconds or more. This resets internal switches and prevents use of the printer.

- To feed printer paper, toggle **ON LINE** button to **OFF LINE** position (red indicator), then press **FEED** button. It is only possible to feed paper when printer is OFF LINE. See *Load Printer Paper* below.
- When printer paper is in position, toggle **ON LINE** button to **ON LINE** position (green indicator).

See Table 2 on page 31 for a description of thermal printer indicators.

Load Printer Paper



Note: Load thermal printer paper in an area protected from direct sunlight.

- Unwrap roll of thermal printer paper (P/N 850043Z) and, if necessary, cut leading edge straight across.

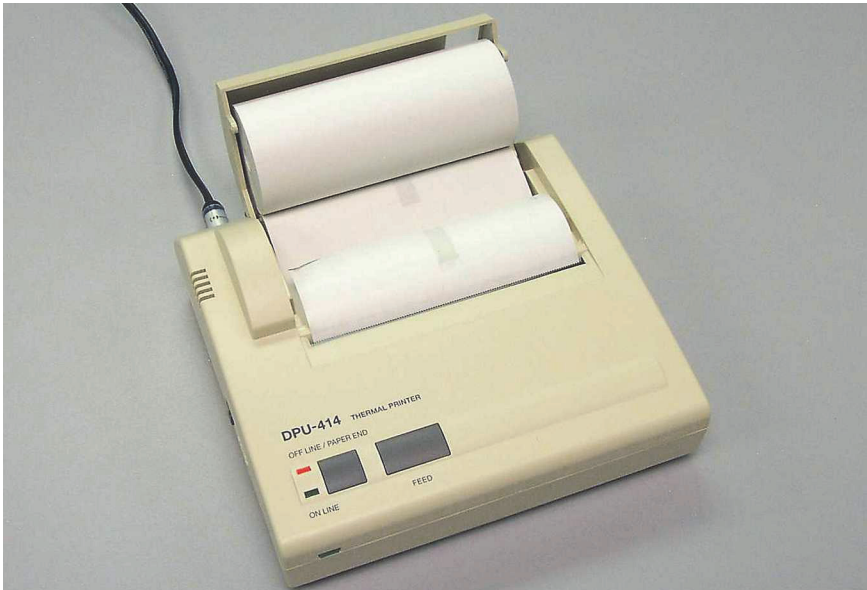


Figure 2-2. Loading Printer Paper

- 2 Open printer paper cover and place roll of thermal paper, edge down, in cover. Printing surface is on inside of roll.
- 3 Turn on power, then push edge of paper into inlet slot at bottom of paper holder until auto-loader catches paper and feeds about 10 cm through paper cutter. If necessary, keep pressing paper **FEED** button until paper feeds straight and smoothly.



Note: When paper is loaded correctly, red OFF LINE indicator stops flashing and stays on to indicate printer is still in OFF LINE mode.

Low Printer Battery Indication

When POWER (green) indicator starts flashing once every 0.5 seconds and printer goes OFF LINE (red indicator), connect AC adapter.

If any data is in the memory buffer when POWER indicator starts flashing, connect the AC adapter as quickly as possible to prevent data loss, then push **ON LINE** button.

Set Up Software

Prerequisites

- Ensure the computer meets the system requirements in *Recommended System Requirements* on page 34.
- Administrative rights may be required to install and use the software, and to set up communication between the computer and the Radon Monitor.

Install Software

- 1 Download the 1027 Radon Monitor software from the Radon Support website, <https://support.sunnuclear.com/radon/> and save it to your computer or laptop.
- 2 Run the executable file, **Radon1027_v<X>.exe** and follow the on-screen instructions to install the software.



Radon 1027 icon appears on the desktop.

Set Up Communication

Model 1027 ships with an RS-232 cable (P/N 801032Z) that connects to a computer's serial (COM) port. This connection allows data transfer from Model 1027 to a computer, where you can view, edit, and print reports.

Newer computers have USB ports instead of serial ports. In this case, an optional *USB to Serial Adapter* cable is used to connect Model 1027 to the computer. A typical adapter has a short cable with a serial connector on one end, a USB connector on the other end, and a small circuit board molded to the connector.

- To connect Model 1027 to a computer using a serial port and the RS-232 data cable, see *Using Serial Port* below.
- To connect Model 1027 to a computer using a USB port, see *Using USB to Serial Adapter* on page 7.

Using Serial Port

- 1 Connect one end of RS-232 data cable to Model 1027's **DATA PORT** and other end to computer's serial (9-pin) **COM port** (Figure 2-3).

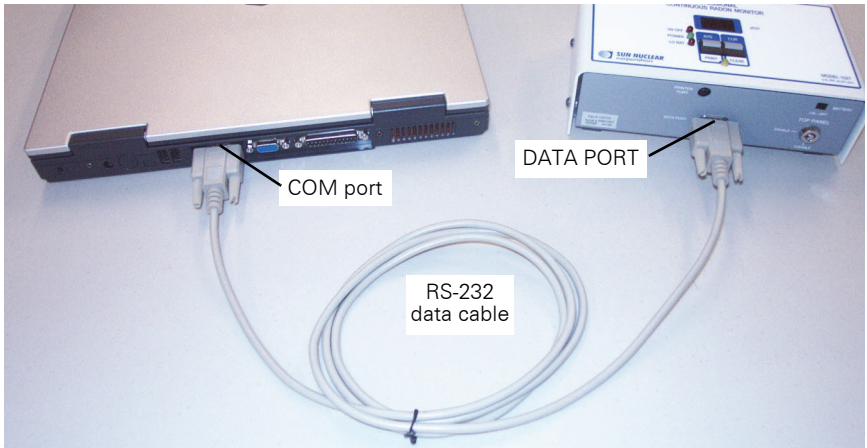


Figure 2-3. Connecting Radon Monitor to Computer with RS-232 Serial Cable

- 2 Double-click the **Radon 1027** desktop icon to start the application.

If the icon is not visible:

- Click **Start > Programs > SNC Group > Radon 1027** or
- Navigate to the folder where the program is installed (for example, **C:\Radon**) and double-click the **Radon.exe** file.

Application opens with a blank screen (Figure 2-4 on page 7).

On menu bar, **Get Data** menu option is dimmed because a Com Port has not been selected. Model 1027 can use Com port 1, 2, 3, or 4.

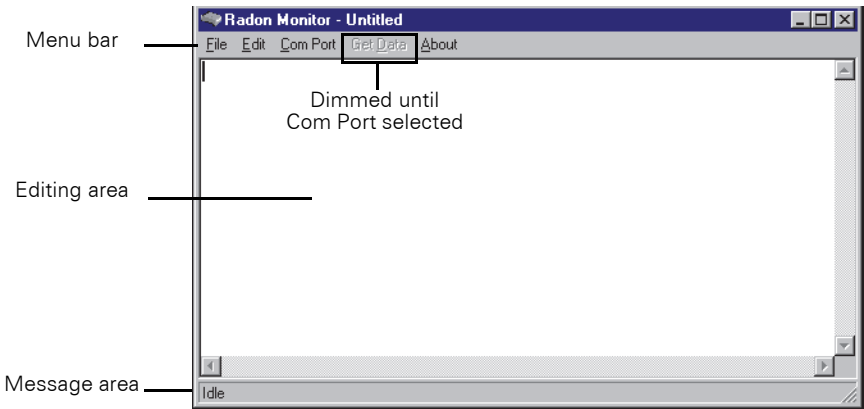


Figure 2-4. Application Opens With Blank Screen

- 3 On computer where RS-232 cable is connected, check connector to identify Com port number.
- 4 Click **Com Port** on menu to display available Com Ports. Unavailable Com Ports are dimmed.
- 5 Select **Com Port** on computer to which RS-232 cable is connected. A bullet appears next to selected port (Figure 2-5).

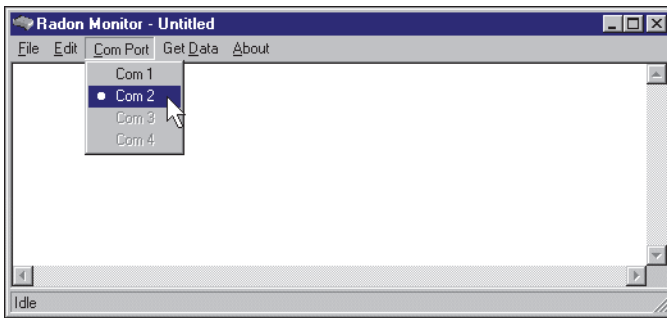


Figure 2-5. Select the Desired Com Port

If you accidentally selected the wrong port, select the correct port.

Using USB to Serial Adapter

Sun Nuclear has tested and approved the IOGEAR Model GUC232A USB to Serial Adapter (Figure 2-6 on page 8). This adapter can be purchased directly from Sun Nuclear by ordering P/N 850029, or can be purchased at a computer store, office supply store, or from an internet supplier.

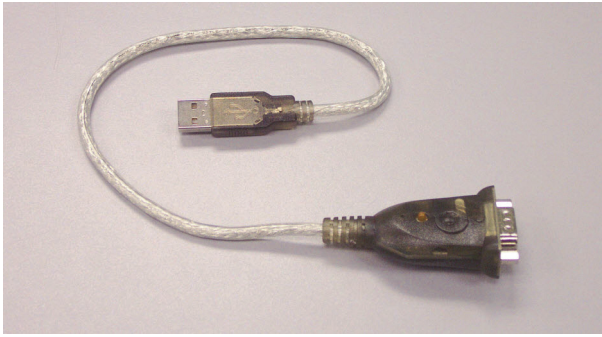


Figure 2-6. IOGEAR Model GUC232A USB to Serial Adapter, P/N 850029



CAUTION: Sun Nuclear will only provide technical support for the IOGEAR Model GUC232A adapter.

Although it is possible to use a different USB to Serial Adapter, doing so is not recommended because other USB to Serial Adapter installations have not been tested. USB to Serial Adapters require special installation procedures, and each manufacturer supplies specific instructions.

System Requirements

- The IOGEAR Model GUC232A USB to Serial adapter can be used with a computer running any of the supported operating systems for the Radon Monitor. See *Recommended System Requirements* on page 34.
- Administrative rights may be required to install the adapter drivers.

Adapter Installation

The following items are required to perform this procedure:

- IOGEAR Model GUC232A USB to Serial Adapter.
- CD and manufacturer's instructions provided with USB to Serial Adapter. Updated adapter drivers can also be downloaded from the IOGEAR website. See *Updating USB to Serial Adapter Drivers* on page 25.
- RS-232 cable included with Model 1027.



CAUTION: Retain CD and manufacturer's instructions for adapter. CD and instructions are needed to install of adapter drivers.

- 1** Connect RS-232 cable from Model 1027 DATA PORT to serial connector on USB to Serial Adapter (Figure 2-7).
- 2** Plug USB connector on other end of USB to Serial Adapter into a USB port on computer.

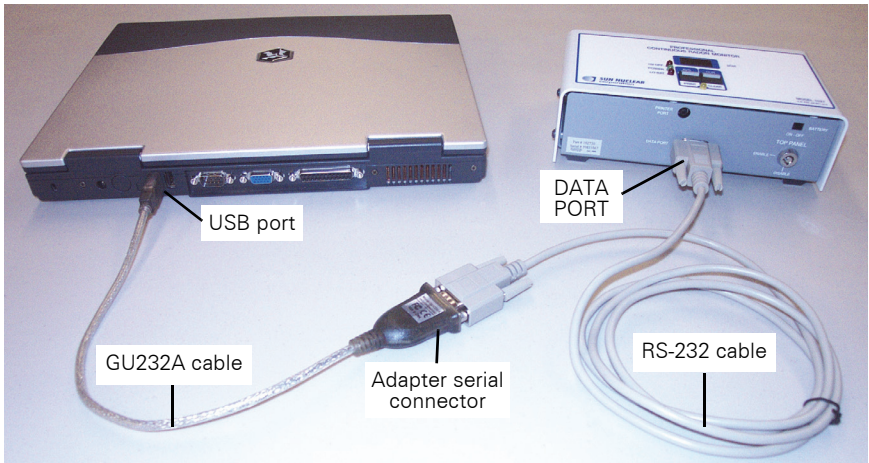


Figure 2-7. Connecting Model 1027 with USB to Serial Adapter

- 3 Insert manufacturer's CD into computer's CD drive, or open downloaded driver file, and follow the manufacturer's on-screen instructions.

Normally a CD drive is set for Autostart and the installation program opens automatically. If it does not, depending on your Operating System, use **My Computer**, **Windows Explorer**, or **File Explorer** to navigate to the CD and manually start the program following the manufacturer's instructions.

Verify Driver Installation

- 1 To verify USB to Serial Adapter drivers were installed correctly, open 'Device Manager' on your computer and check the COM port connection. If you are not sure how to open your computer's Device Manager, follow the instructions below for your Operating System.

- **Windows 10:**
Right-click the **Start** button, then select **Device Manager** from the context menu.
- **Windows 8.1:**
On the desktop, right-click **This PC** icon, select **Properties** to display the 'System' window, then click **Device Manager** to display a list of devices. Or, right-click **Control Panel**, and in the 'Control Panel' window, click **Hardware and Sound > Device Manager** to display a list of devices.
- **Windows 7:**
On the desktop, right-click **My Computer**, select **Properties** to display the 'System Properties' window, click the **Hardware** tab, then select **Device Manager**. Type a password or provide confirmation if prompted to do so.
Or, click **Start > Control Panel > Device Manager**.

- 2 In 'Device Manager' window, expand **Ports (COM & LPT)** to see a list of connected ports.

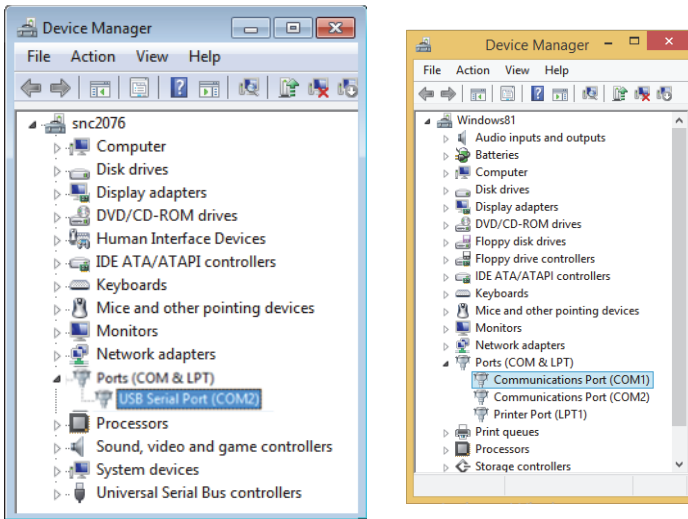


Figure 2-8. Checking USB to Serial Port in Device Manager (Windows 7 and 8.1)

In Windows 10, if **Ports (COM & LPT)** does not appear in the list, in 'Device Manager,' click **View > Show hidden devices**.

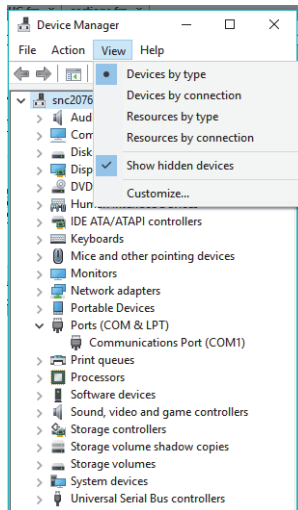


Figure 2-9. Viewing Hidden Devices in Windows 10 Device Manager

- 3 In the Ports list, look for a port labeled **ATEN USB to Serial Bridge (COM#)** if using recommended IOGEAR USB to Serial adapter. (Look for something similar to **USB Serial Port (COM#)** if using a different adapter.)

- 4 Verify the port is correct by disconnecting and then reconnecting USB end of cable from computer. Port should disappear from list and then reappear.
If no port disappears and reappears when you disconnect and reconnect the cable, the computer does not recognize the USB to Serial Adapter. Reinstall drivers provided with USB to Serial Adapter, and then try this procedure again. (See also *Troubleshooting USB to Serial Adapter* on page 25.)
- 5 Make note of serial port number (COM port) of USB to Serial adapter. You will need this to set the Radon Monitor application to connect to this port.

Set COM Port in Radon Monitor Software

- 1 After USB to Serial Adapter is successfully installed, power up Model 1027 and launch Radon Monitor application.
- 2 On menu, click **Com Port** and select Com port number set up in previous section for USB to Serial Adapter.

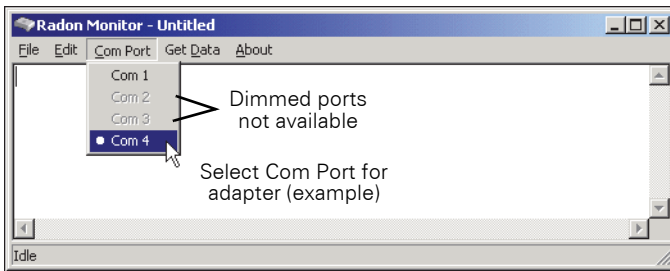


Figure 2-10. Selecting Adapter Com Port in Radon Monitor Application



Note: Radon Monitor application only recognizes Com ports 1, 2, 3, or 4. Ports dimmed on menu are not available.

3 Operation

Set Up



CAUTION: Do not use in outdoor environments. Humidity and extreme temperatures will cause measurement errors.



CAUTION: Do not allow cell phones within 10 feet of the Model 1027 if the cell phone is turned on and the Radon Monitor is actively acquiring measurements. Cell phone signals can cause readings that are higher than the actual radon measurement.

- 1** Unpack Model 1027 and place in position within space to be monitored for radon gas. The device does not need to be level.
- 2** **Avoid using switch-controlled outlets.** Plug power adapter into power input jack on Model 1027 (Figure 3-1), then plug power adapter into a mains power wall outlet that matches power ratings printed on power supply.

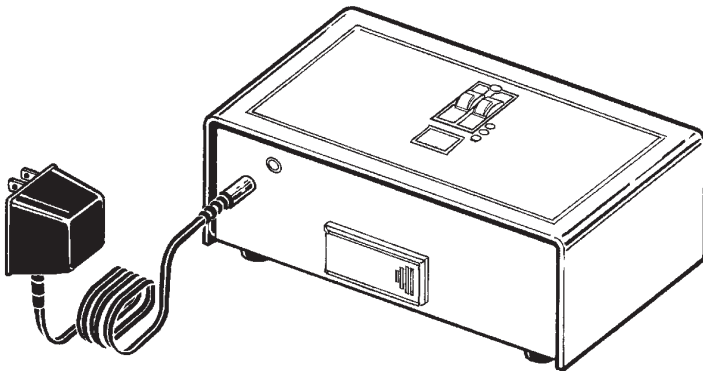


Figure 3-1. Connecting Power to Model 1027

- Green POWER LED turns on.
 - Yellow LED flashes twice followed by a single flash to indicate Model 1027 has performed all internal diagnostics and is functioning properly.
- 3** Insert TOP PANEL key and turn to **ENABLE** position to activate top panel controls.



CAUTION: Clear memory before starting a new measurement. If memory is not cleared, new measurements will be averaged with the old measurements still in memory.

- 4 Press **AVG** button. If memory is clear, three decimal points appear in display. If memory is not clear, long term average radon concentration is displayed. In this case, you must clear memory before collecting measurements.

Clear Memory

- 1 Press and hold both buttons on top of Model 1027 until yellow LED turns on, then release both buttons. Yellow LED flashes.
- 2 While yellow LED is flashing, press and hold **CLEAR** button. Yellow LED initially turns off; then turns on solid, not flashing.
- 3 Release **CLEAR** button when yellow LED turns on solid.
- 4 When yellow LED and display LEDs flash, followed by a single flash of yellow LED, memory is cleared.



Note: When Model 1027 is powered on, a tamper sensor is always active except for a 15-second period immediately following a **CLEAR** memory procedure. To avoid a tamper notation on the first reading, do not move Model 1027 once the tamper sensor is active.

Conduct Test

- 1 If desired, switch on backup battery. A fresh battery provides about 20 hours of back-up operation.
- 2 Turn TOP PANEL switch to **DISABLE**, then remove key.



Note: To test tamper sensor, **CLEAR** memory and conduct a test for several hours. During the test, try lifting or sliding Model 1027. In the printed results, a "T" should appear in the interval when the disturbance was made.

- 3 At end of monitoring period, insert TOP PANEL key and turn to **ENABLE**.

Display Results

- 1 Press **AVG** to display the average radon concentration in pCi/l over the total monitoring period.
- 2 Press **CUR** to display the radon concentration in the current 12-hour period.



Note: The **AVG** and **CUR** display values continue to update during the entire test, even if the test period exceeds the maximum storage of 90 intervals. The interval storage stops updating after 90 intervals until the next memory clear.

- 3 To print results, review *Delayed Results* below before proceeding to *Reports* on page 16. Or, record results on a piece of paper for a handwritten report.

Delayed Results

Test results can be displayed, printed, or downloaded later or at another location, provided you understand the following differences:

- When power is disconnected, the value of the latest partial interval and the **CUR** value are lost from temporary memory.
- When power is on (including battery power) Model 1027 continues to operate, providing values that are averaged into the result.
- If you take an **AVG** reading, disconnect power, restore power later and take a second reading, the second **AVG** reading may be slightly different from the first reading. This is because the first **AVG** reading includes the value for the partial one hour interval in process. This partial value is stored in temporary memory and is lost when power is disconnected.

This second **AVG** value is calculated using only completed intervals stored in non-volatile memory.

Interpreting Results

The Model 1027 radon monitor is calibrated by setting internal switches to determine the calibration J-factor, which provides the conversion between counts per hour and pCi/L for that Model 1027. A separate calibration factor is also calculated and printed on the calibration report.

The Model 1027 automatically multiplies the hourly measurements by the J-factor to yield the actual pCi/L to within 5%, and then displays these results on the printed report.

To improve accuracy, the user can manually multiply the measurement results by the calibration factor that is listed on the calibration report for the Model 1027.

The measurement results on the printed report are calculated as follows:

- The hourly measurements are the number of counts recorded during that hour, times the J-factor, rounded to the nearest 0.1 pCi/L.
- The Overall Average is the number of total counts, divided by the number of hours, times the J-factor, then rounded to the nearest 0.1 pCi/L.
- The EPA Protocol Average is calculated the same as the Overall Average, excluding the first four hours of measurements.

Note that the average of the displayed hourly measurements and the reported averages may not be the same. This is due to differences in the rounding. As described above, the displayed hourly measurements are rounded each hour,

while each average is only rounded once. The reported average is thus a more accurate measurement than averaging the displayed hourly measurements.

If the EPA Protocol Average is close enough to the 4.0 pCi/L EPA threshold that rounding is a possible issue, additional radon measurements should help to determine the actual radon level.

Shutting Down

- 1 Unplug power adapter from mains power.



CAUTION: Switch off backup battery. When backup battery is on, Model 1027 continues to operate.

- 2 Switch off backup battery to avoid measurement interference with completed test and to prevent battery depletion.

4 Reports

Thermal Printer Reports

Figure 4-1 shows measurement results displayed in a sample typical thermal printer report.

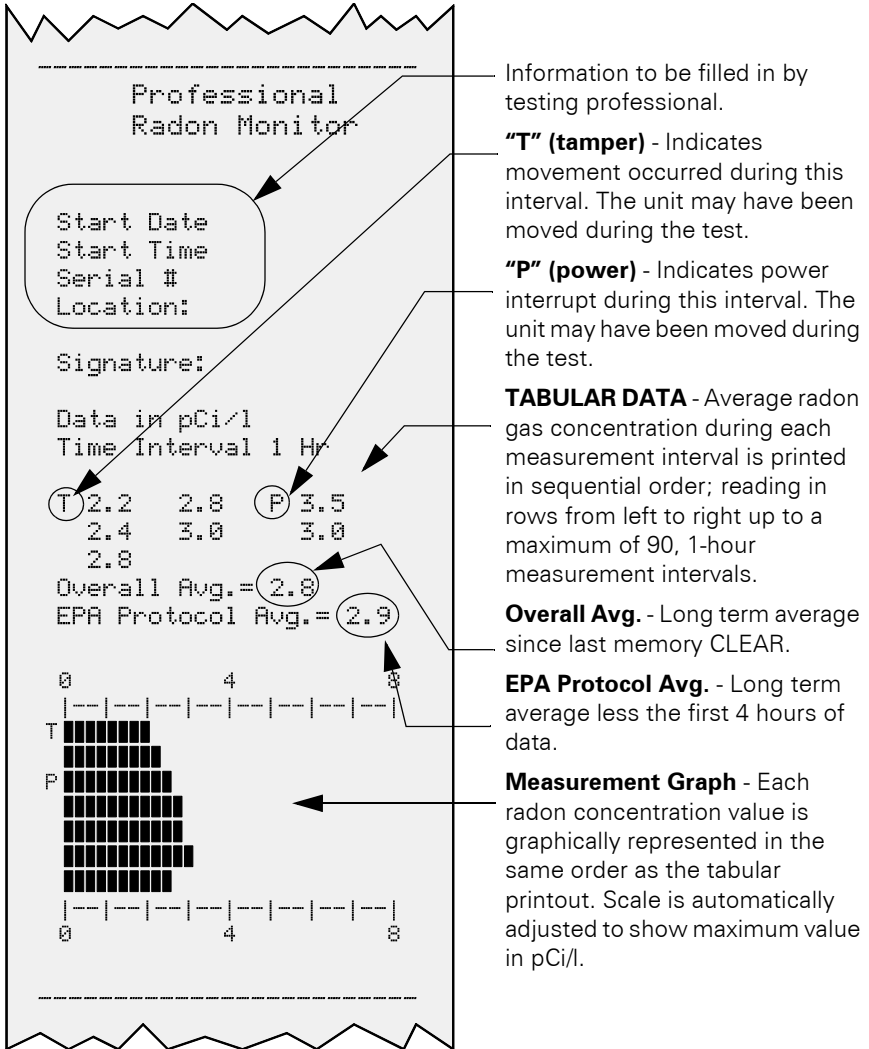


Figure 4-1. Example Thermal Printer Report

To print a thermal printer report:

- 1 Ensure Model 1027 and printer are powered up and connected (see *Set Up Thermal Printer* on page 3), and a minimum of three hours of data has been collected.
- 2 Press and hold both buttons on top of Model 1027 until yellow LED turns on solid, then release buttons. Yellow LED flashes.
- 3 While yellow LED is flashing, press and hold PRINT button until yellow LED turns on solid, not flashing.
- 4 Release PRINT button. Printer begins printing paper report.
- 5 When yellow LED flashes once, data transfer is complete.

Computer Reports

Prerequisites

Before creating or printing reports with a computer:

- Communication between Model 1027 and the computer must be set up. See *Set Up Hardware* on page 3.
- Radon Monitor software application must be installed. See *Set Up Software* on page 5.

Set Up Report Information

If desired, before transferring data from Model 1027 to a computer, configure header and footer information to be automatically added to each report. This information must be entered **before** data is transferred.

- 1 Launch Radon Monitor application, then select **Edit > Info** to open 'Information Setup' dialog box (Figure 4-2).

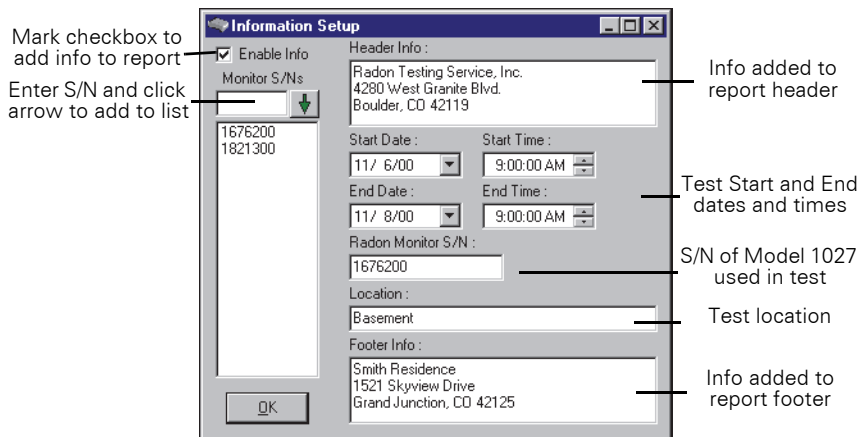


Figure 4-2. Information Setup Dialog Box

- 2 Mark **Enable Info** checkbox, then enter desired information.
See Table 3, *Radon Monitor Report Information*, on page 32 for additional instructions on completing the fields.
- 3 Click **OK**, then proceed to *Transfer Data* below.

Transfer Data



Note: *At least three hours of data should be accumulated before transferring data.*

- 1 Ensure Model 1027 is powered on and connected to computer. (See *Using Serial Port* on page 6 or *Using USB to Serial Adapter* on page 7.)
- 2 Launch Radon Monitor application.
- 3 Verify proper Com port is selected. (See *Set COM Port in Radon Monitor Software* on page 11.)
- 4 Optionally, add report information. (See *Set Up Report Information* on page 17.)
- 5 Click **Get Data**.
Message “*Listening for data on Com X...*” displays at bottom of screen.
- 6 On top of Model 1027, press and hold both buttons until yellow LED lights solid, then release both buttons. Yellow LED flashes.
- 7 With yellow LED flashing, press and release **Print** button to transmit data. Message at bottom of screen displays “*Acquiring data on Com X, please wait...*”.
- 8 When data transfer is complete, report displays (Figure 4-3).

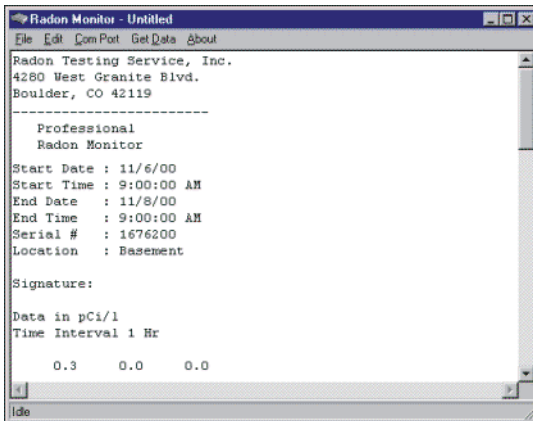


Figure 4-3. Report Displayed in Editing Screen

- 'Acquiring Data...' message indicates computer is able to communicate with Model 1027 via selected Com port.
- If "Index out of bounds" message is displayed after pressing Print button, Model 1027 does not have sufficient test data.

Edit and Print Reports

The central part of the Radon Monitor application screen is an editing window. Text can be added, deleted, or changed in any part of the report using standard Windows keystrokes to enter or delete characters. Use scroll bars to view other parts of report.

- On the **Edit** menu, use **Cut**, **Copy**, and **Paste** to make changes.
- To interpret report results, see Figure 4-1 on page 16. Data between the header and footer in the editing screen is the same as is printed on thermal printer paper.
- To print the report, select **File > Print** and in the dialog box, click **OK**.

Save Reports

Reports can be saved in two formats:

- ASCII text format ("Text Files"). The suffix "_t" is appended to the file name.
- Tab-delimited format suitable for importing into a spreadsheet, such as Microsoft Excel. The suffix "_s" is appended to the file name. In this format, numerical values are placed in individual cells, which allows the use of graphing functions and other spreadsheet tools.

- 1 On **File** menu, click **Save As**. 'Save As' dialog box opens (Figure 4-4). By default, files are saved in **C:\Radon\Data** subdirectory. You can save files here, or select a different folder.

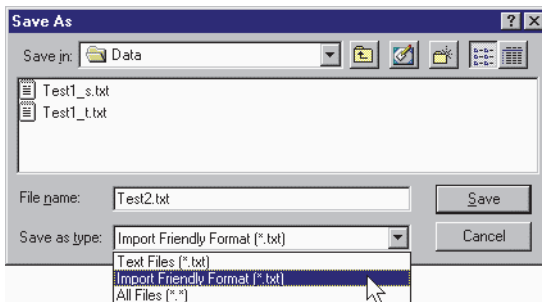


Figure 4-4. Save As Dialog Box

- 2 Use **Save as Type** drop-down list and select format type.
- 3 Enter a **File Name**. Use a naming scheme suitable to your purpose, such as client name, address, date, serial number, or some combination. The appropriate suffix is added automatically depending on the selected file type.
- 4 Click **Save**.

5 Support and Maintenance

Maintaining Hardware

Repairs



WARNING: Model 1027 contains high-voltage circuits. Do not open the case. There are no user-serviceable parts inside the device.

If there are problems with the device, contact Sun Nuclear Support. See *Contacting Sun Nuclear Support* on page 28.

Inspection

Inspect the device and all cables for physical damage before and after each use. Do not use any cable that is damaged or has broken insulation. Replace the cable immediately. If any device damage, mechanical or electrical degradation, or measurement errors are suspected, contact Sun Nuclear Corporation for repair or replacement.

Storage

Store the Radon Monitor in an indoor, protected environment. Do not store the device in the trunk of a car for extended periods. Keep the device dry.

Cleaning

Clean the unit with a soft dry cloth. Do not use liquid cleaners, solvents, or abrasives.

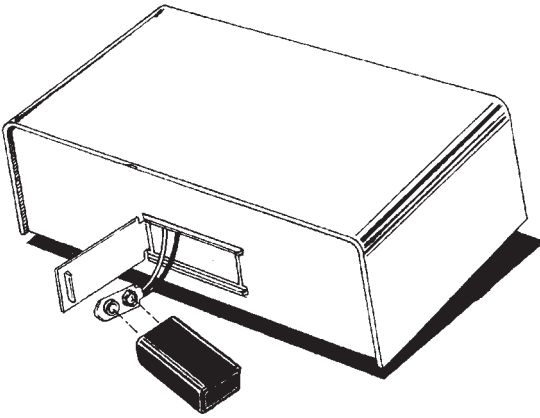
Disposing and Recycling

The instrument contains electrical components. In some countries the disposal of electrical components is subject to special requirements. When the components are no longer functional or are otherwise ready to be discarded, recycle or dispose of them according to local waste management or recycling regulations.

Service and Calibration

The recommended calibration frequency for Model 1027 is one year. For service or calibration, the Model 1027 must be returned to Sun Nuclear Corporation. See *Contacting Sun Nuclear Support* on page 28.

Changing Backup Battery



To change Model 1027 backup battery:

- 1** Pull out on one end of hinged battery compartment door (Figure 5-1).
- 2** Remove battery from connector, install a new 9V alkaline battery, and close battery compartment door.

Figure 5-1. Changing Model 1027 9V Backup Battery

Thermal Printer Maintenance

Rechargeable Battery Pack

The thermal printer's battery pack (P/N 750052) allows report printing without AC power. The battery pack is automatically recharged when AC power is connected.

Charging Battery Pack



Note: Always charge the battery in 5 to 40 °C (41 to 104 °F) temperature range, to avoid degrading battery pack.

- 1** Turn power off.
- 2** Connect AC adapter to printer. POWER light flashes once every second while battery is charging. It takes about 10 hours to completely recharge.
- 3** When POWER light stops flashing and turns off, battery is fully charged. Disconnect AC adapter.

Inserting Battery Pack

- 1** Turn printer over and slide battery cover away from battery pack enclosure. See Figure 5-2 on page 22.
- 2** Connect battery pack connector to printer connector.
- 3** Turn battery pack so label is visible, insert in printer, and close battery cover.



Figure 5-2. Inserting and Removing Battery Pack

Removing Battery Pack

- 1 Turn printer over and slide battery cover away from battery pack enclosure.
- 2 Pull out battery pack, grasp connector with thumb and index finger, and disconnect battery pack.
- 3 Close battery cover.

Efficient Printer Battery Use

Battery efficiency decreases if the battery is recharged more than necessary. Confirm whether POWER light is flashing and battery charge has decreased before recharging battery.

When using the rechargeable battery, turn off the power switch after use. Leaving the power switch on will consume battery and eventually run the battery down.

When using the AC adapter, note that the battery gradually recharges whether the printer is on or off. It takes about 15 hours to charge the battery with the power on. Battery charging is temporarily disrupted while the printer is printing and resumes when printing is completed. When not using the printer, turn off the power switch and unplug the AC adapter.

Printer DIP Switch Settings

The thermal printer (P/N 850040Z) has internal DIP switches set by the manufacturer. For proper operation, these switches must be set as shown (Figure 5-3). Check and, if necessary, set the switches as follows:

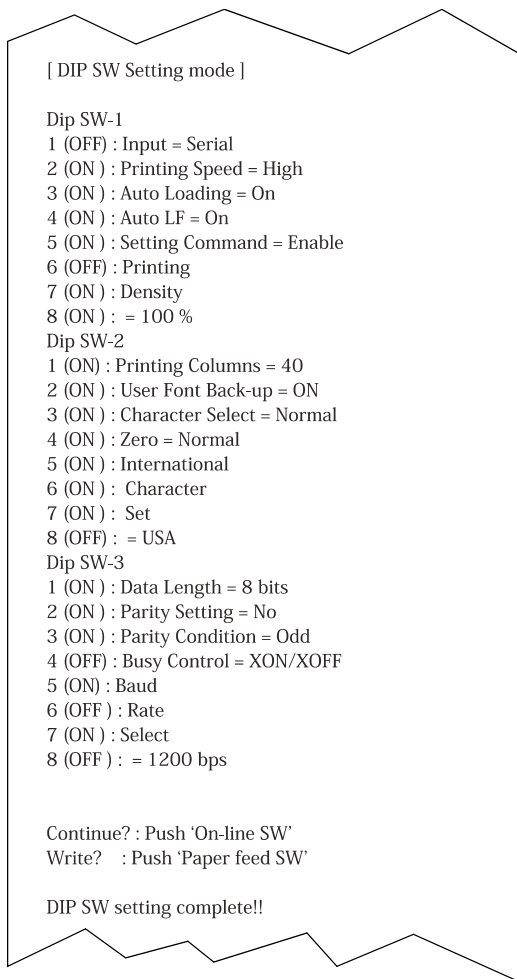


Figure 5-3. DIP Switch Settings for Printer

- 1 Slide power switch to OFF position (0), then slide power switch to ON position (I) while pressing and holding **ON LINE** button.
- 2 Release **ON LINE** button after list of current DIP switch settings (Figure 5-3) begins to print. When list of settings is complete, a prompt appears at the bottom of the printout:
"Continue? : Push On-line SW"
"Write? : Push Paper feed SW"
- 3 To leave DIP switch settings the same, push **FEED** button.
- 4 To change any DIP switch settings, push **ON LINE** button. The prompt *"Dip SW-1"* appears on the printout below the current settings.



Note: All eight SW-1 switches must be set to on or off before exiting. Do not exit in the middle.

- Set each of the eight switches in DIP SW-1 by pressing either **ON LINE** for "on" or **FEED** for "off." As each switch is set to ON or OFF, printer prints the selection. When switch 8 is set, printer once again prompts with "Continue?" or "Write." Press **ON LINE** switch to "Continue to SW-2."



CAUTION: Never turn the printer power off while writing the new settings to memory. When "Dip SW setting complete" is printed, turn the power off.

- In same manner, set DIP switches for SW-2 and SW-3.
- When SW-3 is finished, press **FEED** to select "Write." Changes are written to printer memory, and printer returns to ON LINE mode.

Troubleshooting

Troubleshooting Model 1027

Problem	Probable Cause	Recommended Action
Average measured value is higher or lower than expected and a change in hourly readings occurred mid-report	Count number of hourly measurements and compare with number of hours Model 1027 was deployed. If number of hourly measurements is greater than number of hours deployed, memory was not properly cleared before testing. Previous measurements are being averaged in with data from current test.	CLEAR memory and re-test. See <i>Set Up</i> on page 12.
Model 1027 has an AVERAGE value, but no CURRENT value	Model 1027 has lost power recently, which cleared CURRENT value. However AVERAGE is maintained until it is deliberately CLEARED.	Re-test.
"Index out of bounds" message displays after pressing PRINT	Not enough data collected.	Accumulate at least three hours of data before transferring to computer.
Battery is dead	Battery switch was left on when mains power was removed and Model 1027 continued to monitor until battery was depleted.	Replace battery.
Report states "NO DATA" after a test	Model 1027 did not have power.	<ul style="list-style-type: none"> Re-test in location with known reliable power. Ensure battery is fresh, battery switch is ON, and POWER LED is ON.

Problem	Probable Cause	Recommended Action
Yellow LED flashing continuously	Model 1027 has failed.	Contact Sun Nuclear.
HV OFF LED on continuously	High Voltage supply is off. Model 1027 has failed.	Contact Sun Nuclear.

Troubleshooting Thermal Printer

Problem	Probable Cause	Recommended Action
Printed report has only a partial report	Printer was not READY when PRINT button was pressed.	Re-print report.
Printed report too light	Thermal printer paper is too old or exposed to sunlight.	Replace thermal printer paper.

Troubleshooting USB to Serial Adapter

Indication	Probable Cause	Remedy
Can't find manufacturer's CD or drivers	Lost or discarded	Download from manufacturer's website
Yellow exclamation point or question mark next to USB to Serial Adapter in Device Manager	Incorrect installation	Reinstall drivers per manufacturer's recommendations.
Warning message that Com port is in use	Conflict with another serial device	Disconnect the other serial device; disable HotSync or ActiveSync; reinstall USB to Serial Adapter.
Installation assigns Com port to number higher than 4	Other serial devices installed	Un-install one serial device installed in Com ports 1 through 4 and reinstall USB to Serial Adapter.
Radon Monitor software does not download data	Wrong Com port selected	Select correct Com port.
	Data not sent from Model 1027	Select Get Data on menu, press AVG and CUR buttons on Model 1027 simultaneously, release when yellow LED solid; press PRINT button when LED is flashing.

Updating USB to Serial Adapter Drivers

If the CD included with the USB to Serial adapter does not provide the correct drivers for your operating system, or to check whether newer drivers are available, visit the adapter manufacturer's website and download the latest drivers for your operating system.

For the recommended USB to Serial RS-232 Adapter (IOGEAR Model GUC232A, Sun Nuclear P/N 850029), go to the IOGEAR website (www.iogear.com) and download the latest drivers using the following steps.

- 1 Click **Support** link and then select **Drivers/Manuals**.
- 2 In 'Search for your product' box, select **Driver** radio button and type **GUC232A** in text box. A link to driver is displayed.

- 3 Click link below search box to display a list of available drivers, then click **Download** link for your operating system.



Note: *Vista 64-bit drivers are not supported by Radon Monitor.*

- 4 In 'File Download window,' click **Save**, and save file to your hard drive. If downloaded file is compressed (*.zip or *.rar format), use an unzip utility to extract contents. Make note of where file is saved/extracted.
- 5 Disconnect and then reconnect USB end of adapter from computer. 'Found New Hardware Wizard' is displayed.
- 6 Click **Locate and install driver software (recommended)**. If Windows requests permission to continue, click **Continue**. Windows may search for drivers online and install them if it finds them. Otherwise, continue.
- 7 If 'Insert the disc' dialog box opens, click **I don't have the disc. Show me other options**.
- 8 If Windows can't find the driver software, click **Browse my computer for driver software (advanced)**.
- 9 When prompted for driver location, click **Browse** and navigate to directory where you saved/extracted driver files. If files are in subfolders for several operating systems, choose correct subfolder for your operating system.
- 10 Click **Next** to install driver. When driver is installed, screen shows that the software for the USB to Serial Adapter was successfully installed.
- 11 Click **Close**.

Troubleshooting Data Download Issues

The steps in this section are for users who have already followed the procedures in *Using USB to Serial Adapter* on page 7 and have **1**) already connected a USB to Serial adapter, **2**) installed drivers for the adapter following the cable manufacturer's instructions, and **3**) are still unable to download data from Model 1027 to the computer.

Typically, the inability to download data from Model 1027 is caused by the Com port number assigned to the adapter. The Radon Monitor software only recognizes Com ports 1 through 4, so if the cable uses Com port 5 or higher the software will not recognize the cable. Perform this procedure to change the Com port assignment to 4 or lower.



Note: *To use this procedure you may need to be logged in to the computer as an administrator.*

- 1 Turn Model 1027 OFF and exit Radon Monitor software.

- 2 Open 'Device Manager' and in 'Device Manager' window, expand **PORTS**. (For instructions see *Verify Driver Installation* on page 9.)
- 3 In Ports list, if using recommended IOGEAR USB to Serial Adapter look for port labeled **ATEN USB to Serial Bridge (com#)**. Look for something similar to **USB Serial Port (com#)** if using a different USB to Serial Adapter cable.
- 4 Verify this is correct port by disconnecting and then reconnecting USB end of cable from computer. Port should disappear from Ports list and then reappear. If none of ports disappear and reappear with above test, computer does not recognize USB to Serial Adapter. Reinstall drivers provided with adapter and then try this procedure again. See *Adapter Installation* on page 8.
- 5 Double-click Port to open Com Port Properties.
- 6 Click **Port Settings** tab, then **Advanced** to display 'Advanced Settings'.
- 7 Click drop-down list with Com port number in it. Ports that are not available are labeled "in use".
- 8 Select available port **1, 2, 3, or 4**.



CAUTION: If ports 1 through 4 are labeled "in use", all ports may be assigned to a connected device OR to software for a device (reserved for use when device is connected). Although it may be possible to successfully connect via a port marked "in use", this might cause a device or software program to malfunction – proceed at your own risk! Sun Nuclear is not responsible for any damage to your computer as a result of selecting a com port labeled "in use".

- 9 Click **OK** to Com port selection then close Advanced Settings window.
- 10 In Com Port properties window, click **OK**.
- 11 Close all other windows opened using 'Device Manager'.
- 12 Return to *Set COM Port in Radon Monitor Software* procedure on page 11 and select the same Com Port number you selected in Step 7 of this procedure.

Removing USB to Serial Adapter Drivers

To reinstall the drivers or to change to a different device, it may be possible to remove the installed drivers via a software process. Refer to the manufacturer's instructions for details.

Contacting Sun Nuclear Support

Visit the Sun Nuclear Radon website, <http://support.sunnuclear.com/radon> for links to product information, including instructional videos and Radon FAQs, Calibration and Repair services, online RMA form, Support, Downloads and useful links.

To view product information or to download product assets, click the links under **Radon Downloads**.

If you need additional assistance, you may request support in two ways:

- Customers **without** a current support/maintenance agreement can submit a support request using our online form, or visit our FAQ's page on the same website, <http://support.sunnuclear.com/radon>.
- Customers **with** a current support/maintenance agreement also have the option to contact the Sun Nuclear Support team by telephone: +1 321-259-6862.

Support Website

Visit the Sun Nuclear Support website to request support via an online form.

- 1** Open an internet browser and navigate to <https://support.sunnuclear.com/radon>.
- 2** In the left panel, click **Contact Support**.
- 3** To open a new support case, click the **New Case form** link, enter your email address and the serial number of any Sun Nuclear instrument used at your facility, then click **Log in** to open the Support Dashboard.

Warranty

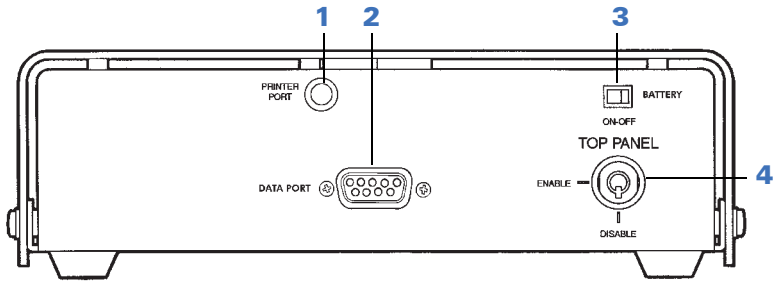
The Sun Nuclear Product Warranty can be found on the Sun Nuclear Radon Support website, <https://support.sunnuclear.com/radon>.

6 Reference

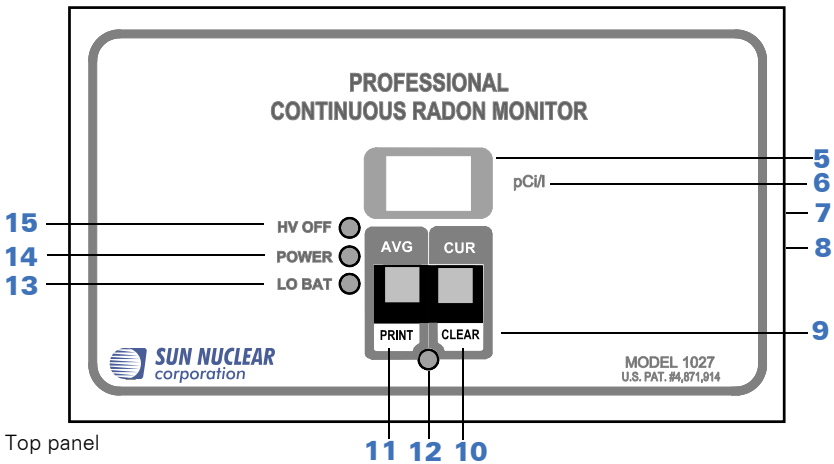
Hardware Reference

Model 1027

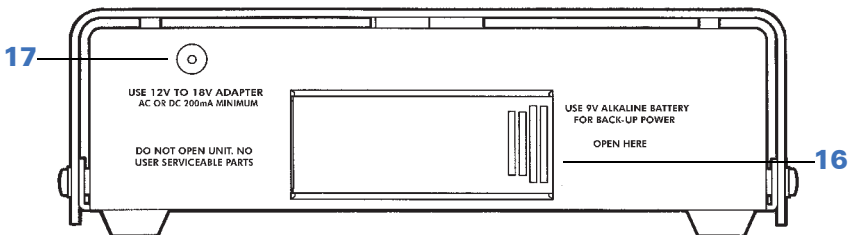
Figure 6-1 describes the Model 1027 connectors, controls and indicators.



Connector Panel



Top panel



Power supply panel

No.	Description	Function
1	PRINTER PORT	Port is for legacy printer (Model 020030), an accessory for early Model 1027 radon monitors. Current printer connects to DATA port.
2	DATA PORT	RS-232 data port provides a way to transfer information from Model 1027 to a laptop or personal computer. The information transferred is identical to that sent through the printer port. (See <i>Set Up Communication</i> on page 5.)
3	BATTERY ON-OFF	Switch connects and disconnects the battery. When ON, the battery powers Model 1027 whenever mains power is not available. When OFF, the battery does not power Model 1027 when mains power is disconnected. Switch should be in the OFF position when Model 1027 is not deployed for a test. This is important for two reasons: first, battery life will be reduced, and second, Model 1027 will continue acquiring measurements as long as battery power is available, which could inadvertently affect the results of a recent test. A fresh battery provides about 20 hours of backup power if mains power fails.
4	TOP PANEL-ENABLE/DISABLE	Key switch enables and disables digital display and buttons on Model 1027 top panel. When in DISABLE position, Model 1027's measurement performance is not affected. Model 1027 will function effectively in either key position. This feature is designed to mitigate the temptation to tamper with a test.
5	DISPLAY	3-digit LED display. Three decimal points display when AVG or CUR is pressed after memory is cleared.
6	pCi/l	Picocuries per liter – the units of radon gas concentration shown on the display.
7	AVG	When pressed, the measured long-term average radon gas concentration in pCi/l is displayed on the 3-digit display. This is the cumulative average of the entire period since the memory was last cleared. This value is not lost if the Model 1027 loses all power.
8	CUR	When pressed, the measured short-term radon gas concentration is displayed. This is a rolling average of the most recent 12 hours. This value is lost if the Model 1027 loses power.
9	PRINT or CLEAR	Function as PRINT and CLEAR buttons only when yellow LED is flashing. To access this mode, hold both buttons down until yellow LED turns on. Then release buttons, and yellow LED begins to flash.
10	CLEAR	Yellow LED must be flashing: When pressed, yellow LED turns off. Hold down until yellow LED turns on again; then release. Yellow LED and display LEDs flash once followed by a single flash of yellow LED. Model 1027 memory is cleared. Disturbance switch is inactive for the next 15 seconds.
11	PRINT	Yellow LED must be flashing: When pressed, Model 1027 sends a report of the data contained in memory to PRINTER and DATA ports. When button is pressed, yellow LED turns on. When released, LED turns off and data transfer begins. When data transfer is complete, yellow LED flashes once.

No.	Description	Function
12	Yellow LED	Function indicator. Normally off. When Model 1027 is powered up, LED flashes twice, followed by a single flash, indicating startup test is complete and unit is functioning normally. During monitoring, yellow LED flashes each time an alpha particle is detected. Flashes rapidly if Model 1027 fails during monitoring. When buttons are in PRINT/CLEAR mode, yellow LED is flashing. In this mode: <ul style="list-style-type: none"> • When PRINT is pressed, yellow LED turns on. When PRINT is released, LED turns off and data transfer begins. When data transfer is complete, yellow LED flashes once. • When CLEAR is pressed, yellow LED turns off. Hold down until yellow LED turns on again; then release. Yellow LED and display LEDs flash once followed by a single flash of yellow LED. Model 1027 memory is cleared.
13	LO BAT	When red LED is on, battery has about two hours of life remaining. Power adapter must be unplugged for LO BAT test.
14	POWER	Green LED is on continuously when Model 1027 is powered by mains power; flashes when powered by batteries only; off when LO BAT is on.
15	HV OFF	Red LED is normally off. When on, High Voltage circuit is off, indicating Model 1027 has failed. See <i>Thermal Printer Maintenance</i> on page 21.
16	Battery compartment	A single 9-volt alkaline battery is used for Model 1027 power backup. Battery is NOT recharged by Model 1027. A fresh battery will operate Model 1027 for approximately 20 hours.
17	Power connector	Power adapter should be plugged into Model 1027 BEFORE adapter is plugged into mains power.

Figure 6-1. Connectors, Controls, and Indicators

Thermal Printer

Table 2. Thermal Printer Indicators

Indicator	Means
Green POWER	<ul style="list-style-type: none"> • Flashing 1x/sec. – power on. • Flashing 1x/.5 sec.– battery low.
Green ON LINE	<ul style="list-style-type: none"> • Flashing – there is data in buffer memory when switch is toggled to OFF LINE.
Red OFF LINE	<ul style="list-style-type: none"> • On steady – Paper feed possible. • Flashing – paper is not set or has run out.
Green ON LINE Red OFF LINE	Both flashing – there is an error.

Software Reference

Table 3. Radon Monitor Report Information

Parameter	Description
Enable Info	<ul style="list-style-type: none"> Mark this checkbox if you want the information to appear in the report. Clear this checkbox if you want none of the information to appear in the report.
Monitor S/Ns	Enter the serial number for each Model 1027 you are using, and click the down arrow to place the serial number in the list. <ul style="list-style-type: none"> Prior to transferring a report to your computer, double-click the serial number you want to appear in the Radon Monitor S/N box. To remove a serial number from the list, click on it and then click Delete.
Header Info	Enter text to appear at top of report.
Start Date/Start Time	Select date and time test started.
End Date/End Time	Select date and time test ended.
Radon Monitor S/N	In S/N list, double-click serial number of Model 1027 used in test to select it.
Location	Enter location of Model 1027 during the test.
Footer Info	Enter text to appear at bottom of report.
Date boxes (Figure 6-2)	<ul style="list-style-type: none"> Use drop down arrow to open a calendar, then scroll to desired month and double-click desired date. Selected date appears in Date box. Alternately, type date directly in box, or highlight month, day or year and increment or decrement value using up/down arrow keys.
Time boxes	<ul style="list-style-type: none"> Type in times desired, or Highlight hours, minutes, or seconds and click arrows to increment or decrement selected value.

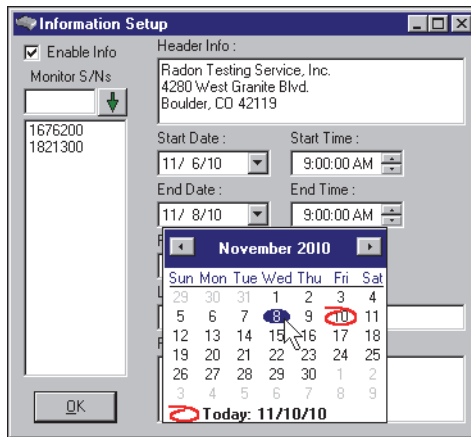


Figure 6-2. Information Setup Calendar Feature

Radon Reference

The U.S. Environmental Protection Agency (EPA) maintains a comprehensive website on radon at <https://www.epa.gov/radon> where you can find EPA documents, brochures, and publications relating to radon.

Below are descriptions of three EPA publications on radon, listed on the EPA's publications website, <https://www.epa.gov/radon/publications-about-radon>.

- *A Citizen's Guide to Radon: The Guide to Protecting Yourself and Your Family from Radon*
This guidance offers strategies for testing your home for radon and discussions of what steps to take after you have tested, as well as discussions about the risk of radon and radon myths.
- *Consumer's Guide to Radon Reduction: How to Fix Your Home*
This booklet is for people who have tested their home for radon and confirmed that they have elevated radon levels. This booklet can help with selecting a qualified contractor to reduce the radon levels in the home, determining an appropriate radon reduction method, and maintaining a radon reduction system.
- *Home Buyer's and Seller's Guide to Radon*
This booklet is intended for anyone who is buying or selling a home, real estate and relocation professionals, home inspectors and others.

7 Specifications

Recommended System Requirements

Characteristic	Details
Operating System	Windows 10, Windows 8.1, or Windows 7
Computer	Minimum <ul style="list-style-type: none">• Processor: x486• Total RAM: 32 MB• Hard disk space: 5 MB• USB port: one• Display resolution: 1024 x 768• Color depth: 32-bit

Model 1027 Specifications

Description	Value
Power Supply	Converter, 120 VAC to 12 VDC, 200 mA, 60 Hz
Measurement Range (l)	0.1 to 999 pCi/l or 1 becquerel per cubic meter (Bq/m ³) to 99.99 kilo becquerels per cubic meter (kBq/m ³)
Accuracy	±25% or 1 pCi/l, whichever is greater after 24 hours
Disturbance Sensor	Inertial switch
Data Port	RS-232, 9-pin, D-connector allows printer data to be sent to PC
Detector	Diffused-junction photodiode
Measurement Interval	1 hour (4, 8, or 24-hour intervals available by special order)
Sensitivity (counts per hour/pCi/l)	2.5
Display	3-digit display LED
Battery Backup	One 9V alkaline battery supplies approximately 20 hours of operation. LED indicates low battery.
Weight (kg / lbs.)	0.91 (2.0)
Dimensions (mm / in.)	203 x 119 x 63.5 (8 x 4.7 x 2.5)
Operating Environment	<ul style="list-style-type: none">• 7 to 35 °C (45 to 95 °F)• 20 to 80% relative humidity, non-condensing
Storage Environment	<ul style="list-style-type: none">• -30 to 50 °C -22 to 122 °F (l)• 10 to 90% relative humidity, non-condensing
Regulatory Evaluation	<ul style="list-style-type: none">• National Radon Safety Board (NRSB); Device code: 31807; Group Code: CR.• National Environmental Health Association National Radon Proficiency Program (NEHA-NRPP); Device Code 223; Group Code 4.

Appendix A: Regulatory Supplement

Sun Nuclear Corporation Symbols

The following symbols are used in this guide and in Sun Nuclear Corporation's product labels.



WARNING: This symbol indicates a risk of electric shock.



WARNING: This symbol indicates a hazard that could result in major injury or equipment damage.



CAUTION: This symbol indicates a potential hazard that could result in a minor injury or equipment damage.



CAUTION: No activated mobile phone.



Important or supporting information.



Manufacturer's Identification (name and address).



Date of Manufacture.



Serial Number.



Catalog Number.



Consult instructions for use. This equipment must be used in accordance with the instructions in this manual. Read all instructions and safety labels before use.



Do not throw in trash; dispose of in an environmentally friendly way.

Operator Responsibility

This guide is intended for an operator who is experienced with the use of radon detection devices. The operator of the device bears the full responsibility for validating measurement results. The device and its accessories must not be used for any other purpose than described in this guide. Violation will result in loss of warranty.

Reporting Health or Safety Related Issues or Concerns

Should the need arise to report any safety or health related issues or concerns regarding the use of Sun Nuclear products, contact Sun Nuclear Support. See *Contacting Sun Nuclear Support* on page 28.

Modifications to Equipment

Any changes or modifications to the instrument that are not expressly approved by Sun Nuclear Corporation could void your warranty.

Interaction with Other Electrical Equipment

The instrument can only be connected to external computer equipment that is compliant with IEC 60950-1, Safety of Information Technology Equipment.

